

**ALPINE COMMONS APARTMENT HOMES**  
 133 BELCHERTOWN ROAD (RT. 9), AMHERST, MA 01002  
 TEL: (413) 256-0741 / FAX: (413) 256-3065  
 E: [ALPINE\\_COMMONS@ASPENSQUARE.COM](mailto:ALPINE_COMMONS@ASPENSQUARE.COM)  
 W: [WWW.ALPINECOMMONS.COM](http://WWW.ALPINECOMMONS.COM)



**ASPEN CHASE APARTMENT HOMES**  
 615 MAIN STREET, AMHERST, MA 01002  
 TEL: (413) 256-0741 / FAX: (413) 256-3065  
 E: [ALPINE\\_COMMONS@ASPENSQUARE.COM](mailto:ALPINE_COMMONS@ASPENSQUARE.COM)  
 W: [WWW.ASPENCHASEAPARTMENTS.COM](http://WWW.ASPENCHASEAPARTMENTS.COM)

**Directions to Aspen Chase:**

From I-91, take exit 19 (Route 9). Follow Route 9 South past the center of Amherst. Aspen Chase is a mile on the left. Another entrance is 615 Main Street, Amherst.

**Directions to Alpine Commons:**

From I-91, take exit 19 (Route 9). Follow Route 9 South past Amherst College. Continue on Route 9 through the four-way Intersection. We are located 4/10 mile on the right hand side.



Its Simple...



[WWW.ALPINECOMMONS.COM](http://WWW.ALPINECOMMONS.COM)  
[WWW.ASPENCHASEAPARTMENTS.COM](http://WWW.ASPENCHASEAPARTMENTS.COM)

It's simple - Alpine Commons and Aspen Chase are UMASS's best value off-campus housing choice. No one else can match our prime location, awesome amenities, and great service at a price that will not be beat. Centrally located to campus and on the bus line, Alpine Commons and Aspen Chase feature studio, 1, 2, 3 and 4 bedroom apartment homes with FREE heat, water, electricity, high speed internet and basic expanded cable. And that's just the beginning. Come and live at UMASS's finest -- Alpine Commons & Aspen Chase Apartment Homes!

## Community Features

- Minutes from UMASS
- On PVTA Bus Line\*\*
- Close to Amherst Center
- On-Site Laundry Facility\*
- Direct Access to PVTA Bus Line\*
- 24-Hour Emergency Maintenance
- Award Winning Customer Service
- Professional On-Site Management
- Professional Landscaping



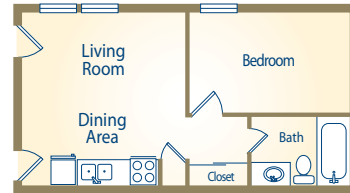
## Apartment Features

- All Utilities Included\*
- FREE Heat & Hot Water
- FREE High Speed Internet
- FREE Expanded Basic Cable
- Washer/Dryer in Most Homes\*\*
- Central Air Conditioning
- Private Patio/Balcony \*\*
- Fully-Applianced Kitchens
- Newly Designed Bathrooms\*
- Wall-to-Wall Carpeting

\* Amenity featured at Aspen Chase only  
 \*\* Amenity featured at Alpine Commons only



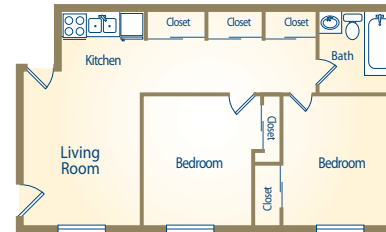
**Aspen Chase**  
**1 Bedroom, 1 Bath, 500 s.f.**



Deposit \_\_\_\_\_

Rent \_\_\_\_\_

**Aspen Chase**  
**2 Bedroom, 1 Bath, 600 s.f.**



Deposit \_\_\_\_\_

Rent \_\_\_\_\_

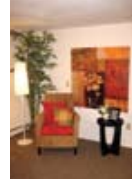
**Aspen Chase**  
**3 Bedroom, 1.5 Bath, 800 s.f.**



Deposit \_\_\_\_\_

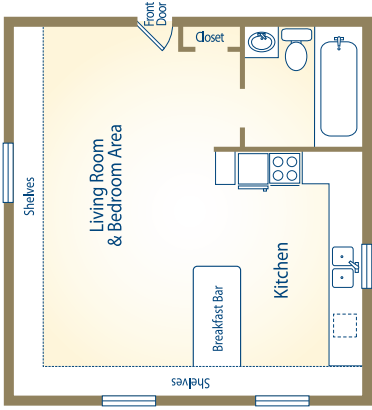
Rent \_\_\_\_\_

All Square Footage is Approximate



*Free High Speed Internet*

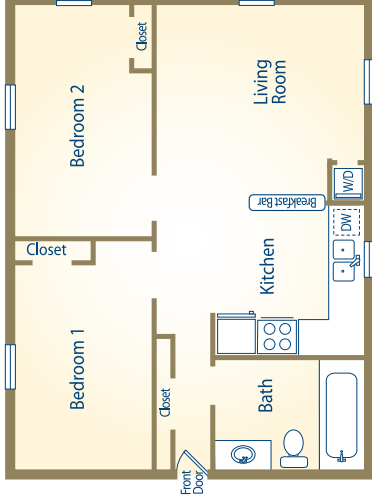
**Studio, 1 Bath, 400 s.f.**



Deposit \_\_\_\_\_

Rent \_\_\_\_\_

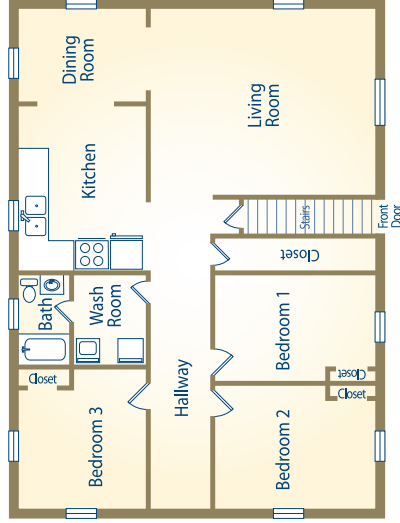
**2 Bedroom, 1 Bath, 650 s.f.**



Deposit \_\_\_\_\_

Rent \_\_\_\_\_

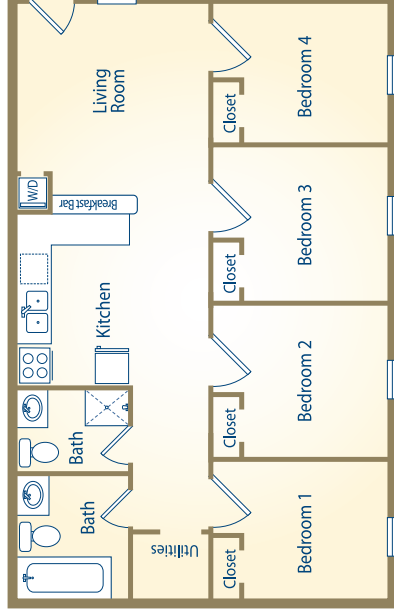
**3 Bedroom, 1 Bath, 1200 s.f.**



Deposit \_\_\_\_\_

Rent \_\_\_\_\_

**4 Bedroom, 2 Bath, 1000 s.f.**



Deposit \_\_\_\_\_

Rent \_\_\_\_\_

All Square Footage is Approximate